

GP Information fact sheet

About Lumos and the benefits for GPs

The Lumos program links de-identified patient records from general practices with NSW Health records, to map patient journeys across the health system in NSW. Lumos generates findings to inform the improvement of health services and patient health outcomes across the state.

Trusted and secure

Lumos is approved by the NSW Population and Health Service Research Ethics Committee. The program has strong data governance and stakeholder representation including GPs and representative bodies, health consumers, NSW Health and Primary Health Networks. Patient data are de-identified before leaving the practice, minimising privacy risks.



“Lumos provided us with significant insights into how our patients interact with the health system outside of our own practice and how we compared to similar practices, across a variety of indicators. This has allowed us to focus on our quality improvement process where they are most needed.” – Dr Nuwan Dharmaratne, BSc Adv (hons) MBBS FRACGP DCH, Hills Family GP

Cumulative consent

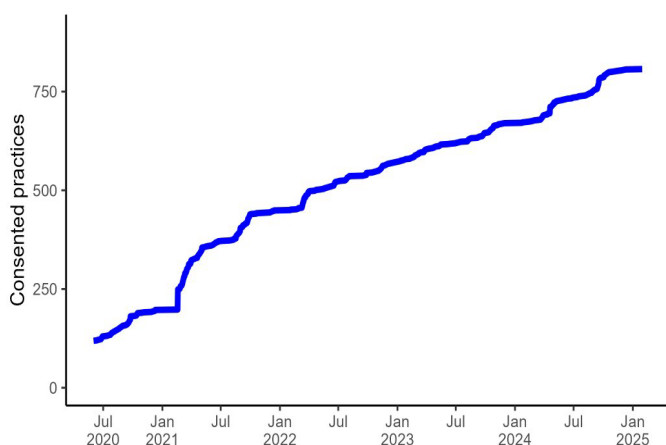


Figure 1. Cumulative consent from participating general practices between July 2020 and January 2025.

- More than **3 million** people attended a participating Lumos GP in the 12 months to 31 March 2024. Representing **38%** of all people in NSW.
- More than **800** general practices consented participating in Lumos (as of February 2025), representing **33.6%** of 2400 practices in NSW (per the NHSD as of July 2024).
- Includes records for approximately **6.8 million** patients since 2010.



GP Information fact sheet



About Lumos and the benefits for GPs

🔊 **A building block for team-based care and data-driven improvement.** 🗨️ – Dr. Jaspreet Saini, MBBS FRACGP MAICD MASLM Dip. Child Health AMA (M), Rosedale Medical Practice

Benefits to participating general practices include:

Effortless

Practices participate at no cost.

Data extraction is automated and does not impact the operation of your practice.

Individual patient consent for Lumos participation not required.

Current

Receive updated custom reports every 6 months with unique insights about your patients.

Reports are continually improved based on GP feedback.

Empowerment

Understand the characteristics of your patient population in the context of your region and state.

Identify opportunities to inform your practice operations and data driven quality improvement activities.

Understand the NSW Health services your patients access outside of your practice.

Included

Contribute to a data asset to inform health system improvement and planning.

Receive ongoing Primary Health Network support.

Generate evidence to support areas of future investment in primary care.

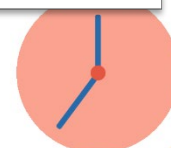
Lumos data includes

Lumos datasets are regularly reviewed and grow over time.

- Ambulance
- Cancer Registry
- Breastscreen
- Cohort-specific data
- Elective surgery waitlist
- Emergency department
- Healthdirect virtualGP
- Hospital admissions
- Hospital cost
- Integrated care
- Mental health ambulatory
- Non-admitted (outpatients)
- Death registrations
- NSW Urgent Care Services
- Patient reported measures
- Waiting for what (coming soon)

GP Datasets:

Patient demographics, encounters, billing, pathology, medications, patient measurements, selected immunisation and selected chronic disease diagnoses.



GP Information fact sheet

About Lumos and the benefits for GPs

Contact your NSW Primary Health Network for more information.

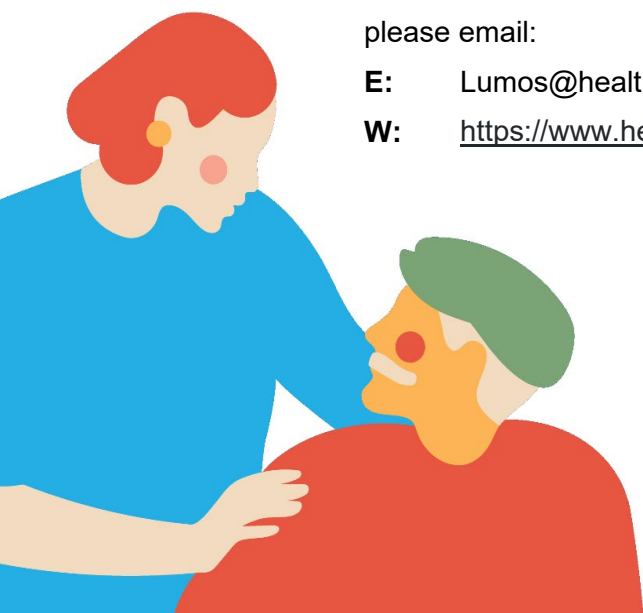
Primary Health Network	Contact
<u>Central and Eastern Sydney</u>	digitalhealth@cesphn.com.au
<u>Hunter New England and Central Coast</u>	James McNeill: JMcneill@thephn.com.au
<u>Murrumbidgee</u>	Andrew Heap: andrew.heap@mphn.org.au
<u>Nepean Blue Mountains</u>	pcs@nbmphn.com.au
<u>North Coast</u>	Javier Gomez: jgomez@hnc.org.au
<u>Northern Sydney</u>	pcait@snhn.org.au
<u>South Eastern NSW</u>	events@coordinare.org.au
<u>South Western Sydney</u>	digitalhealth@swsphn.com.au
<u>Western NSW</u>	digitalhealth.team@wnswphn.org.au
<u>Western Sydney</u>	support@wentwest.com.au

Contact us

If you'd like to know anything more about Lumos,
please email:

E: Lumos@health.nsw.gov.au

W: <https://www.health.nsw.gov.au/lumos>



In partnership with the NSW Ministry of Health and Primary Health Networks.

